



**SPECIALTY**

# SPECIALTY



### Index

Routers .....	102-103
Tappers .....	104
Clinch Nut Tools .....	106
Rivet Shavers .....	107
Skin Clamp Runners .....	108
Saws .....	109-110
Nibblers & Shears .....	111
Specialty Accessories .....	112-113



# Special Applications Require Special Tools

Sioux Tools has a superb selection of specialty tools designed for very specific applications, and as always, we manufacture the finest tools in the industry.

## Routers

Sioux offers a selection of routers and laminate trimmers in 0.75 hp (0.56 kw) or 1.5 hp (1.1 kw) configurations. They feature lockoff lever, twist or finger throttles and come with a selection of different bases.

## Tappers

Choose from pistol grip or inline configurations.

The pistol grip offers chuck capacity

from No. 10 thru 1/2" size. The inline models offer a B12 taper spindle.

## Metalworking Tools

## Nibbler

Our 0.75 hp (0.56 kw) nibbler has the power for use on cold rolled sheet steel up to 18 gauge.





### Shears

This versatile tool cuts 18 gauge steel and plastics up to 3/32" thick. It also makes straight or curve cuts clean and smooth.

### Aircraft Specialty Tools

Sioux Tools offers several specialized tools for the aircraft industry such as Skin Clamp Runners, which are available in pistol grip or our exclusive Z-handle design. Rivet Shavers come in both pistol grip and inline configurations, with speeds up to 21,000 rpm.

### Clinch Nut Tools

As manufacturing trends continue to evolve manufacturers are finding more and more uses for thin wall assembly applications. Sioux Tools has a selection of Clinch Nut tools that handle these unique fasteners with precision and ease, and our Rapid Reverse feature makes them the best Clinch Nut tool on the market today.

### Air Powered Saws

Sioux Tools offers an outstanding Jig Saw and powerful Reciprocating Saw. Both offer variable speed control for precise cutting action in any application.



**DRILLS**

**ROUTERS**

**Performance:**

Power: 0.75 hp (0.56 kw)

Speed: 18,000 rpm - 23,000 rpm

Collet Size: 1/4" - 6 mm

**ASSEMBLY**

**Features:**

Lockoff Lever Throttle

Front Exhaust

Interchangeable Base

Built-in Speed Control

**ABRASIVE**

**FINISHING**

**PERCUSSIVE**

**SPECIALTY**

**ACCESSORIES**



Model Number	Collet Size	Free Speed		Weight		Height		Base Diameter		Air Consumption		Sound Level
		rpm	lb	kg	in.	mm	in.	mm	cfm	l/s	dB(A)	
▶ 1971HP	1/4"	23,000	2.8	1.3	8.5	215	3.5	90	27	13	82	
1971HPD	1/4"	23,000	2.8	1.3	6.5	165	4.0	100	27	13	82	
<b>Template Head - Standard Lever</b>												
RT8AS-18N4	1/4"	18,000	1.8	0.8	7.4	190			27	13	84	
RT8AS-23N4	1/4"	23,000	1.8	0.8	7.4	190			27	13	84	
RT8AS-18N6M	6 mm	18,000	1.8	0.8	7.4	190			27	13	84	
RT8AS-23N6M	6 mm	23,000	1.8	0.8	7.4	190	See Template		27	13	84	
<b>Template Head - Lockoff Lever</b>												
RT8AS-18N4	1/4"	18,000	1.8	0.8	7.4	190	Guide Chart on		27	13	84	
RT8AKS-23N4	1/4"	23,000	1.8	0.8	7.4	190	page 113		27	13	84	
RT8AKS-18N6M	6 mm	18,000	1.8	0.8	7.4	190			27	13	84	
RT8AKS-23N6M	6 mm	23,000	1.8	0.8	7.4	190			27	13	84	
<b>3" Dia. Router Base - Standard Lever</b>												
RT8AS-18B4	1/4"	18,000	2.1	1.0	7.3	185	3.0	78	27	13	84	
RT8AS-23B4	1/4"	23,000	2.1	1.0	7.3	185	3.0	78	27	13	84	
RT8AS-18B6M	6 mm	18,000	2.1	1.0	7.3	185	3.0	78	27	13	84	
RT8AS-23B6M	6 mm	23,000	2.1	1.0	7.3	185	3.0	78	27	13	84	
<b>3" Dia. Router Base - Lockoff Lever</b>												
RT8AKS-18B4	1/4"	18,000	2.1	1.0	7.3	185	3.0	78	27	13	84	
RT8AKS-23B4	1/4"	23,000	2.1	1.0	7.3	185	3.0	78	27	13	84	
RT8AKS-18B6M	6 mm	18,000	2.1	1.0	7.3	185	3.0	78	27	13	84	
RT8AKS-23B6M	6 mm	23,000	2.1	1.0	7.3	185	3.0	78	27	13	84	

**General:**

Air Inlet Size: 1/4" NPT

Recommended hose size: 3/8" (10 mm)

Tool performance rated at 90 psig (6.2 bar) air pressure

Tools available with BSPT air inlet upon request

**Standard Equipment:**

Parts list, Safety and Instruction manual

Base/Head Assembly, Collet, Collet Wrenches

**Accessories:**

Router Accessories, see pages 112-113

▶ The quick ship icon indicates our most popular models, selected for their "off-the-shelf" availability from a Sioux Authorized Distributor or distribution warehouse. See page 9 for more information on Quick Ship.

**Template guides must be ordered separately.**

Tools are shipped standard with Sioux collet; to order with Erickson style collet, add an E to the end of the model number (example: RT8AS-18N4E).

**SAFETY** Precaution: Read and follow all safety and operating instructions.

**WARNING:** Face & eye protection must be worn while operating power tools, per ANSI B186.1



## ROUTERS

### Performance:

Power: 1.5 hp (1.1 kw)

Speed: 20,000 rpm

Collet Size: 1/4" - 1/2"

### Features:

Twist and Finger Throttle

4" (100 mm) or 6" (150 mm) Diameter Base

Side Exhaust



Model Number	Collet Size	Free Speed	Weight		Height		Base Diameter		Maximum Air Consumption		Sound Level
		rpm	lb	kg	in.	mm	in.	mm	cfm	l/s	dB(A)
<b>Finger Throttle</b>											
1980AF	1/4"	20,000	6.0	2.7	9.8	248	4.0	100	38	18	85
1980F	3/8"	20,000	6.0	2.7	9.8	248	4.0	100	38	18	85
1981F	1/2"	20,000	6.0	2.7	9.8	248	4.0	100	38	18	85
<b>Twist Throttle</b>											
1980A	1/4"	20,000	4.5	2.0	7.6	193	4.0	100	38	18	85
▶ 1980	3/8"	20,000	4.5	2.0	7.6	193	4.0	100	38	18	85
1981	1/2"	20,000	4.5	2.0	7.6	193	4.0	100	38	18	85
1982A	1/4"	20,000	7.5	3.4	8.3	211	6.0	150	38	18	85
1982	3/8"	20,000	7.5	3.4	8.3	211	6.0	150	38	18	85
1983	1/2"	20,000	4.8	2.2	8.3	211	6.0	150	38	18	85

### General:

Air Inlet Size: 1/4" NPT

Recommended Hose Size: 3/8" (10 mm)

Performance rated @ 90 psig (6.2 bar) air pressure

Tools available with BSPT air inlet upon request

### Standard Equipment:

Parts list, Safety and Instruction manual

Base & Collet Wrenches

### Accessories:

Router Accessories, see pages 112-113

▶ The quick ship icon indicates our most popular models, selected for their "off-the-shelf" availability from a Sioux Authorized Distributor or distribution warehouse. See page 9 for more information on Quick Ship.



**SAFETY** Precaution: Read and follow all safety and operating instructions.

**WARNING:** Face & eye protection must be worn while operating power tools, per ANSI B186.1



**DRILLS**

**ASSEMBLY**

**ABRASIVE**

**FINISHING**

**PERCUSSIVE**

**SPECIALTY**

**ACCESSORIES**

**TAPPERS**

**Performance:**

Power: 0.75 hp (0.56 kw) - 0.9 hp (0.7 kw)  
 Torque: 115 in. lb (13.0 Nm) - 310 in. lb (35 Nm)  
 Speed: 400 rpm - 1200 rpm

**Features:**

Inline and Pistol Grip Handles  
 Rapid Reverse  
 B12 Spindle Taper (Inline Models)



**TP9A-4C20**



**2L2500B12**



**2L2550**



Model Number	Chuck Capacity		Maximum Torque (Soft Joint)		Free Speed rpm	Weight		Length		Air Consumption		Sound Level dB(A)
	in.	mm	in. lb	Nm		lb	kg	in.	mm	cfm	l/s	
<b>0.9 hp (0.7 kw) - Pistol Grip - Trigger Start</b>												
▶ TP9A-4C20	#10-5/16	5-8	310	35	400	2.8	1.3	8.3	211	30	14	78
TP9A-4C32	1/4-1/2	6-13	310	35	400	2.8	1.3	8.3	211	30	14	78
<b>0.75 hp (0.56 kw) Inline-Lever Start - Rear Exhaust</b>												
2L2550	10 - 5/16	5 - 8	310	35	400	3.0	1.4	11.8	300	30	14	82
2L2550B	1/4 - 1/2	6 - 13	310	35	400	3.0	1.4	11.8	300	30	14	82
<b>0.75 hp (0.56 kw) - Inline - B12 Spindle Taper - Lever Start - Rear Exhaust</b>												
2L2500B12			310	35	400	2.7	1.2	9.8	249	30	14	82
2L2100B12			240	27	700	2.7	1.2	9.8	249	30	14	82
2L2200B12			115	13	1200	2.7	1.2	9.8	249	30	14	82

**General:**

Air Inlet Size: 1/4" NPT  
 Recommended Hose Size: 3/8" (10 mm)  
 Performance rated @ 90 psig (6.2 bar) air pressure  
 Tools available with BSPT air inlet upon request  
 Inline models do not include chuck

**Standard Equipment:**

Parts list, Safety and Instruction manual  
 Comfort Grip (TP9A series)  
 Tapping Chuck (TP9A series)

**Accessories:**

Tapper Accessories, see pages 112-113

▶ The quick ship icon indicates our most popular models, selected for their "off-the-shelf" availability from a Sioux Authorized Distributor or distribution warehouse. See page 9 for more information on Quick Ship.

**SAFETY** Precaution: Read and follow all safety and operating instructions.



**WARNING:** Face & eye protection must be worn while operating power tools, per ANSI B186.1



# The Fastest Way Out of a Clinch

Sioux Tool's new rapid reverse Clinch Nut Tools are meeting the demand of today's manufacturing marketplace with versatility and simplicity. Clinch nuts, also known as captive nuts, provide a reliable means of securing assembly components in thin wall applications. These unique fasteners are inserted into predrilled holes in thin materials such as sheet metal, and with the aid of a Sioux Clinch Nut Tool, compress and expand to clamp the material. This process creates a strong, secure base with a male or female thread for assembling additional components.

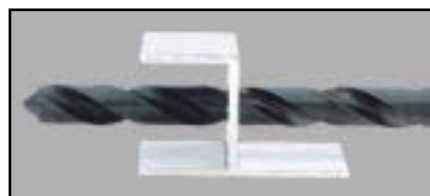
When installing clinch nut fasteners, the key to achieving high productivity with accurate, repeatable results is matching the right tool and fastener to your application. The right combination of rundown speed and stall torque in conjunction with a quick reverse method for disengaging the tool, will provide the best results. The Sioux CN9B series tools offer higher torque in a wide range of speeds so you can match the right tool to your application. Our powerful tools allow you to use faster rundown speeds while maintaining high torque output, plus our exclusive Rapid Reverse feature makes short work of direction changes ensuring fast disengagement from the fastener.

The ergonomic pistol housing with comfort rubber grip ensures operator comfort while maintaining superb balance and control. The powerful, precision motor ensures fast and consistent installation of fasteners in a variety of applications, and the wide selection of speeds and threads in both English and metric sizes make Sioux Tools your choice for all your clinch nut applications.

In addition to the CN9BP pistol grip series, Sioux offers the CN9BL series with an inline handle.

## Clinch Nut Installation Procedure

**Step 1**  
Pre-drill hole for fastener.



**Step 2**  
Insert fastener.



**Step 3**  
Thread tool into fastener.



**Step 4**  
Run tool to collapse fastener. Reverse tool to release.



**Step 5**  
Assemble.



DRILLS

ASSEMBLY

ABRASIVE

FINISHING

PERCUSSIVE

SPECIALTY

ACCESSORIES



**SAFETY** Precaution: Read and follow all safety and operating instructions.  
**WARNING:** Face & eye protection must be worn while operating power tools, per ANSI B186.1

**DRILLS**

**CLINCH NUT TOOLS**

**Performance:**

Torque: 55 in. lb (6 Nm) - 350 in. lb (40 Nm)  
 Speed: 400 rpm - 2500 rpm



**CN9BP**

**Features:**

Reversible  
 Pistol Grip, Inline and Z-handle



**CN9BL**



**ASSEMBLY**

**ABRASIVE**

Base Model Number	Free Speed	Maximum Torque		Weight		Length		Side To Center		Maximum Air Consumption		Sound Level
	rpm	in. lb	Nm	lb	kg	in.	mm	in.	mm	scfm	l/s	dB(A)
<b>Pistol Grip</b>												
CN9BP-4	400	350	40	3.4	1.6	10.4	265	1.8	145	30	14	78
▶ CN9BP-7	700	200	23	3.4	1.6	10.4	265	1.8	145	30	14	78
▶ CN9BP-12	1200	120	14	3.4	1.6	10.4	265	1.8	145	30	14	78
CN9BP-20	2000	70	8	2.9	1.3	9.0	230	1.8	145	30	14	78
CN9BP-25	2500	55	6	2.9	1.3	9.0	230	1.8	145	30	14	78
<b>Inline</b>												
CN9BL-4	400	325	37	3.3	1.5	11.9	300	1.8	145	30	14	78
CN9BL-7	700	185	21	3.3	1.5	11.9	300	1.8	145	30	14	78
CN9BL-12	1200	105	12	3.3	1.5	11.9	300	1.8	145	30	14	78
CN9BL-20	2000	70	8	2.8	1.3	10.7	290	1.8	145	30	14	78
CN9BL-25	2500	55	6	2.8	1.3	10.7	290	1.8	145	30	14	78

**FINISHING**

**PERCUSSIVE**

**General:**

Air Inlet: 1/4" NPT  
 Recommended Hose Size: 3/8" (10 mm)  
 Performance rated @ 90 psig (6.2 bar) air pressure  
 Tools available with BSPT air inlet upon request

**Standard Equipment:**

Parts List, Safety & Instruction Manual  
 Comfort Grip (Pistol Grip Models)

**Accessories:**

Clinch Nut Accessories, see pages 112-113

▶ The quick ship icon indicates our most popular models, selected for their "off-the-shelf" availability from a Sioux Authorized Distributor or distribution warehouse. See page 9 for more information on Quick Ship.

Power units can be ordered separately using part number above. For ordering complete tools select the appropriate power unit from the chart above and head assembly from the chart below and combine their part numbers as shown in the following example: CN9BP-4-420.

**SPECIALTY**

**ACCESSORIES**

**Clinch Nut (female)**



Thread Size	Order Number Suffix	
	Serrated Nose	Smooth Nose
#4-40	440	440S
M3 x 0.5	M305	M305S
#6-32	632	632S
#8-32	832	832S
M4 x 0.7	M407	M407S
#10-24	1024	1024S
#10-32	1032	1032S
M5 x 0.8	M508	M508S
1/4-20	420	420S
M6 x 1.0	M610	M610S
5/16-18	518	518S
M8 x 1.25	M8125	M8125S
3/8-16	616	616S
M10 x 1.5	M1015	M1015S

**Clinch Stud (male)**



Thread Size	Order Number Suffix	
	Serrated Nose	Smooth Nose
#4-40	440F	440SF
M3 x 0.5	M305F	M305SF
#6-32	632F	632SF
#8-32	832F	832SF
M4 x 0.7	M407F	M407SF
#10-24	1024F	1024SF
#10-32	1032F	1032SF
M5 x 0.8	M508F	M508SF
1/4-20	420F	420SF
M6 x 1.0	M610F	M610SF
5/16-18	518F	518SF
M8 x 1.25	M8125F	M8125SF
3/8-16	616F	616SF
M10 x 1.5	M1015F	M1015SF

Head assemblies can be ordered separately by adding the prefix CNK to the above number, example: CNK-420.



## RIVET SHAVERS

### Performance:

Power: 0.75 hp (0.56 kw) - 0.90 hp (0.67 kw)

Speed: 21,000 rpm

### Features:

Pistol Grip and Inline



RS9A-210-8



Model Number	Cutter Diameter		Free Speed rpm	Weight		Length		Side to Center		Maximum Air Consumption		Sound Level dB(A)
	in.	mm		lb	kg	in.	mm	in.	mm	cfm	l/s	
<b>0.75 hp (0.56 kw) - Pistol Grip - 1/4"-28 Internal Thread</b>												
RS9A-210-5	5/16	8	21,000	3.0	1.4	8.2	208	0.9	23	30	14	78
RS9A-210-6	3/8	9.5	21,000	3.0	1.4	8.2	208	0.9	23	30	14	78
RS9A-210-7	7/16	11	21,000	3.0	1.4	8.2	208	0.9	23	30	14	78
▶ RS9A-210-8	1/2	13	21,000	3.0	1.4	8.2	208	0.9	23	30	14	78
RS9A-210-9	9/16	14	21,000	3.0	1.4	8.2	208	0.9	23	30	14	78
RS9A-210-10	5/8	16	21,000	3.0	1.4	8.2	208	0.9	23	30	14	78
<b>0.90 hp (0.67 kw) - Inline - 1/4"-28 Internal Thread</b>												
RS9AS-210-8	1/2	13	21,000	3.0	1.4	10.2	260	0.9	23	28	13	82

#### General:

Air Inlet Size: 1/4" NPT

Recommended Hose Size: 3/8" (10 mm)

Performance rated @ 90 psig (6.2 bar) air pressure

Tools available with BSPT air inlet upon request

#### Standard Equipment:

Parts list, Safety and Instruction manual

Skirt

Comfort Grip (Pistol Grip Models)

#### Accessories:

Rivet Shaver Accessories, see pages 112-113

▶ The quick ship icon indicates our most popular models, selected for their "off-the-shelf" availability from a Sioux Authorized Distributor or distribution warehouse. See page 9 for more information on Quick Ship.



**SAFETY** Precaution: Read and follow all safety and operating instructions.  
**WARNING:** Face & eye protection must be worn while operating power tools, per ANSI B186.1

**DRILLS**

**ASSEMBLY**

**ABRASIVE**

**FINISHING**

**PERCUSSIVE**

**SPECIALTY**

**ACCESSORIES**

**SKIN CLAMP RUNNERS**

**Performance:**

Speed: 2200 rpm - 2500 rpm

**Features:**

Pistol Grip and Z-handle



Model Number	Free Speed rpm	Weight		Length		Side To Center		Maximum Air Consumption		Sound Level dB(A)
		lb	kg	in.	mm	in.	mm	cfm	l/s	
<b>Z-Handle</b>										
▶ 2S2300SR	2200	2.6	1.2	5.7	145	0.9	23	16	8	75
<b>Pistol Grip</b>										
▶ SR9A-25	2500	2.7	1.2	9.2	234	0.9	23	30	14	78

**General:**

Air Inlet Size: 1/4" NPT  
 Recommended Hose Size: 3/8" (10 mm)  
 Performance rated @ 90 psig (6.2 bar) air pressure  
 Tools available with BSPT air inlet upon request

**Standard Equipment:**

Parts list, Safety and Instruction manual  
 Comfort Grip (Pistol Grip Models)

**Accessories:**

Skin Clamp Runner Accessories, see pages 112-113

▶ The quick ship icon indicates our most popular models, selected for their "off-the-shelf" availability from a Sioux Authorized Distributor or distribution warehouse. See page 9 for more information on Quick Ship.



## RECIPROCATING SAW

### Performance:

Power: 1.0 hp (0.7 kw)

Strokes per Minute: 1800

Stroke Length: 0.6" (15 mm)

### Features:

Lockoff Trigger Start

Variable Speed

Swivel Air Inlet



DRILLS

ASSEMBLY

ABRASIVE

FINISHING

PERCUSSIVE

SPECIALTY

ACCESSORIES

Model Number	Stroke Length		Strokes per Minute	Power		Weight		Length		Air Consumption		Sound Level
	in.	mm		hp	kw	lb	kg	in.	mm	cfm	l/s	dB(A)
▶ 1300	0.6	15	1800	1.0	0.7	7.8	3.5	17.2	437	35	17	86

#### General:

Air Inlet Size: 1/4" NPT

Recommended Hose Size: 3/8" (10 mm)

Performance rated @ 90 psig (6.2 bar) air pressure

Tools available with BSPT air inlet upon request

#### Standard Equipment:

Parts list, Safety and Instruction manual

Swivel Air Inlet

2 Blades

Protective Boot

#### Accessories:

Reciprocating Saw Accessories, see pages 112-113

▶ The quick ship icon indicates our most popular models, selected for their "off-the-shelf" availability from a Sioux Authorized Distributor or distribution warehouse. See page 9 for more information on Quick Ship.



SAFETY Precaution: Read and follow all safety and operating instructions.

**WARNING:** Face & eye protection must be worn while operating power tools, per ANSI B186.1



**DRILLS**

**ASSEMBLY**

**ABRASIVE**

**FINISHING**

**PERCUSSIVE**

**SPECIALTY**

**ACCESSORIES**

**PANEL SAW AND CUTOFF SAW**

**Performance:**

Power: 0.75 hp (0.56 kw) & 1.0 hp (0.7 kw)  
 Free Speed: 1400 rpm - 23,000 rpm  
 Depth of Cut: 0.06" (1 mm) - 0.6" (16 mm) (Model 3P1460)



Model Number	Blade/Wheel Diameter		Free Speed rpm	Power		Weight		Length		Air Consumption		Sound Level dB(A)
	in.	mm		hp	kw	lb	kg	in.	mm	cfm	l/s	
<b>0.75 hp (0.56 kw) - Panel Saw - Pistol Grip - Trigger Start</b>												
3P1460 <sup>1</sup>	2.5	64	1400	1.0	0.7	3	1.4	14.3	363	33	16	80
<b>1.0 hp (0.7 kw) - Cutoff Saw - Inline - Lockoff lever Start - Front Exhaust</b>												
1957HP	3.0	76	23,000	0.75	0.56	1.6	0.7	6.6	168	28	13	87

**General:**

Air Inlet Size: 1/4" NPT  
 Recommended Hose Size: 3/8" (10 mm)  
 Performance rated @ 90 psig (6.2 bar) air pressure  
 Tools available with BSPT air inlet upon request

**Standard Equipment:**

Parts list, Safety and Instruction manual  
 45° Degree Air Inlet (3P1460)  
 Support Handle (3P1460)  
 3 Blades  
 Spindle Wrenches & Guard (1957HP)

**Accessories:**

Panel and Cutoff Saw Accessories, see pages 112-113

<sup>1</sup> Not CE Certified

**SAFETY** Precaution: Read and follow all safety and operating instructions.

**WARNING:** Face & eye protection must be worn while operating power tools, per ANSI B186.1



## NIBBLER & SHEARS

### Performance:

Power: 0.75 hp (0.56 kw) & 0.90 hp (0.67 kw)

Capacity: 18 Gauge Cold Rolled Steel



Model Number	Capacity (Cold Rolled Steel)	Power		Weight		Length		Side To Center		Maximum Air Consumption		Sound Level
		hp	kw	lb	kg	in.	mm	in.	mm	cfm	l/s	dB(A)
<b>Nibbler</b>												
1444HPL <sup>1</sup>	18 Ga	0.75	0.56	2.8	1.3	8.1	206	0.9	23	28	13	85
<b>Shears</b>												
▶ 1446ES	18 Ga	0.90	0.67	2.9	1.3	8.0	203	0.9	23	25	12	78
1446HPL <sup>1</sup>	18 Ga	0.75	0.56	2.8	1.3	10.0	254	0.9	23	28	13	85

#### General:

Air Inlet Size: 1/4" NPT  
 Recommended Hose Size: 3/8" (10 mm)  
 Performance rated @ 90 psig (6.2 bar) air pressure  
 Tools available with BSPT air inlet upon request

#### Standard Equipment:

Parts list, Safety and Instruction manual  
 Comfort Grip (1446ES)

#### Accessories:

Nibbler and Shears Accessories, see pages 112-113

▶ The quick ship icon indicates our most popular models, selected for their "off-the-shelf" availability from a Sioux Authorized Distributor or distribution warehouse. See page 9 for more information on Quick Ship.

<sup>1</sup> Not CE Certified

DRILLS

ASSEMBLY

ABRASIVE

FINISHING

PERCUSSIVE

SPECIALTY

ACCESSORIES



SAFETY Precaution: Read and follow all safety and operating instructions.  
**WARNING:** Face & eye protection must be worn while operating power tools, per ANSI B186.1



**DRILLS**

**Rivet Shaver Skirts**



2925-8

Part Number	Cutter Diameter	
	in.	mm
2925-5	5/16	8
2925-6	3/8	10
2925-7	7/16	11
2925-8	1/2	13
2925-9	9/16	14
2925-10	5/8	16

**ASSEMBLY**

**ABRASIVE**

**Router Base Assembly**



1992

1993

1994

Part Number	Used On
1992	1971HPB
1993	1971HP
1994	1971HPC

**FINISHING**

**PERCUSSIVE**

**Collets**



44440



21126

Collet Type	Part Number	Capacity	For Use On
Sioux	44440	1/4"	1971HP series
Sioux	66038	6 mm	1971HP series
100 Series	21126	1/4"	1980, 1981
100 Series	21125	3/8"	1982, 1983

**SPECIALTY**

**ACCESSORIES**



21095



21139

Part Number	Collets
21095	#10-5/16"
21139	1/4"-1/2"

**Reciprocating Saw Blades**

Packaged in cartons of 5



1815

1816

1818

Part Number	Length		Teeth Per Inch
	in.	mm	

For use on Model 1300

1815	6	150	10
1810	6	150	14
1813	4	100	14
1811	6	150	18
1812	4	100	18
1814	6	150	24
1816	6	150	6
1817	6	150	10
1818	6	150	6
1819	12	300	6

Packaged in quantities of 50

**Panel Saw Blades Sets of 12**



Part Number	For Use On	Diameter		Number of Teeth
		in.	mm	
1886	3P1460	2-1/2	65	44
1887	3P1460	2-1/2	65	80
1888	3P1460	2-1/2	65	100

**Laminate Trimmer Base**

**Part No. 1991**

For use on HP series routers



**Template Follower**

**Part No. 1990**

For use on 1980 series Routers  
Accept bits up to 7/16" (11 mm)



**SAFETY** Precaution: Read and follow all safety and operating instructions.

**WARNING:** Face & eye protection must be worn while operating power tools, per ANSI B186.1



### Support Handle

Part No. 2355



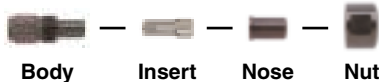
### Collet Chuck Assemblies

#### Sioux Style Collets



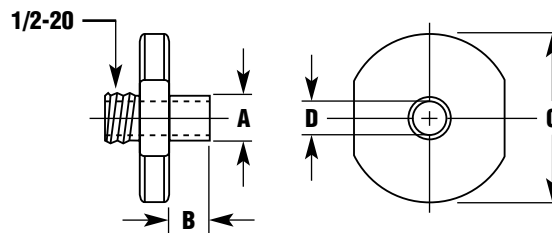
Collet Chuck Assemblies	Sioux Collet Chuck				
	1/8"	3 mm	3/16"	1/4"	6 mm
Chuck Assembly	43342	68617	43341	43340	68618
Collet Body	21096	21096	21096	21096	21096
Collet Insert	44522	66037	44523	44440	66038
Collet Nose	N/A	N/A	N/A	N/A	N/A
Collet Nut	21097	21097	21097	21097	21097

#### Erickson 200 Series Collets



Collet Chuck Assemblies	Erickson Collet Chuck				
	1/8"	3 mm	3/16"	1/4"	6 mm
Chuck Assembly	43346	68619	43347	43348	68620
Collet Body	21103	21103	21103	21103	21103
Collet Insert	21102	68616	21101	21100	68615
Collet Nose	21105	21105	21105	21105	21105
Collet Nut	21104	21104	21104	21104	21104

### Template Guide Chart



Part Number	Dimensions In Inches			
	A Pilot O.D	B Pilot Length	C Flange O.D	D Pilot I.D.
68613-12	3/8	1/4	3/4	9/32
68613-14	3/8	3/8	3/4	9/32
68613-16	3/8	1/2	3/4	9/32
68613-22	3/8	1/8	1-1/2	9/32
68613-24	3/8	1/4	1-1/2	9/32
68613-26	3/8	3/8	1-1/2	9/32
68613-40	7/16	1/4	3/4	21/64
68613-42	7/16	3/8	3/4	21/64
68613-44	7/16	1/2	1-1/2	21/64
68613-48	7/16	1/4	1-1/2	21/64
68613-50	7/16	3/8	1-1/2	21/64
68613-52	7/16	1/2	1-1/2	21/64
68613-62	1/2	1/4	1-1/2	11/32
68613-64	1/2	3/8	1-1/2	11/32
68613-66	1/2	1/2	1-1/2	11/32
68613-72	1/2	1/2	2-1/2	11/32

DRILLS

ASSEMBLY

ABRASIVE

FINISHING

PERCUSSIVE

SPECIALTY

ACCESSORIES



SAFETY Precaution: Read and follow all safety and operating instructions.  
**WARNING:** Face & eye protection must be worn while operating power tools, per ANSI B186.1



**DRILLS**

**Hose Whip Assembly with Filter Lubricator**



1641FHW

**ASSEMBLY**

Part Number	Capacity		Hose I.D.		Thread	Max. Working Pressure		Recommended Oil Weight	Filter Rating Micron
	Fl. Oz.	ml	in.	mm		psi	bar		
1641FHW	1.4	41	1/2	13	7/8" - 24	300	20.6	10 Wt.	40
1641FHW-1/2	1.4	41	1/2	13	1/2" NPT	300	20.6	10 Wt.	40
1642FHW-1/2	3.7	110	1/2	13	1/2" NPT	260	17.9	10 Wt.	40
1642FHW-3/4	3.7	110	3/4	19	3/4" NPT	260	17.9	10 Wt.	40

**ABRASIVE**

\* Hose length: 6' (1.83 m)

**Hose Whip Assembly with Lubricator**

**FINISHING**



1641HW

**PERCUSSIVE**

Part Number	Capacity		Hose I.D.		Thread	Max. Working Pressure		Recommended Oil Weight
	Fl. Oz.	ml	in.	mm		psi	bar	
1641HW	1.4	41	1/2	13	7/8" - 24	300	20.6	10 Wt.
1641HW-1/2	1.4	41	1/2	13	1/2" NPT	300	20.6	10 Wt.
1642HW-1/2	3.7	110	1/2	13	1/2" NPT	260	17.9	10 Wt.
1642HW-3/4	3.7	110	3/4	19	3/4" NPT	260	17.9	10 Wt.

\* Hose length: 6' (1.83 m)

**SPECIALTY**

**Safety Lock Cable**



3010

**ACCESSORIES**

Part Number	Cable Size		Thread Size	
	in.	mm	in.	mm
3010	1/8 x 20	3 x 510	1/2 to 1-1/4	13 to 32

\*Note: Always bleed air pressure on hose before removing safety lock cable

**SAFETY** Precaution: Read and follow all safety and operating instructions.

**WARNING:** Face & eye protection must be worn while operating power tools, per ANSI B186.1



**Inline Lubricators**



1641

Part Number	Capacity		Pipe Size NPT	Max. Working Pressure		Rec. Oil Weight
	Fl. Oz.	ml		psi	bar	
1641	1.4	41	1/2"	500	34.5	10 Wt.
1642	3.7	110	3/4"	260	17.9	10 Wt.

**Inline Filter Lubricators**



1641F

Part No.	Capacity		Pipe Size NPT	Max. Working Pressure		Rec. Oil Weight	Filter Rating Micron
	Fl. Oz.	ml		psi	bar		
1641F	1.4	41	1/2"	500	34.5	10 Wt.	40
1642F	3.7	110	3/4"	260	17.9	10 Wt.	40

**Inline Filters**



1643-1/2

Part Number	Thread	Length		Filter Rating
	FM NPT	in.	mm	Micron
1643-1/2	1/2"	3-1/4	83	40
1643-3/4	3/4"	3-1/4	83	40

**Filter, Regulator, Lubricator Assembly**

**Part No. 1660**

1/2" NPT fittings

Air flow: 30 - 75 cfm



1660

Part Number	Description
1660	Complete Air Control Unit, 1/2"PT
1661	Lubricator Only, 1/2"PT
1662A	Regulator with Gauge, 1/2"PT
1663	Manual Flex Drain Filter, 1/2"PT
1664	Manifold Block
1665	Connecting End Blocks
1666	Modular Sleeve ("O" Ring included)
1667	Automatic Drain - Optional
1668	Sleeve Wall Mounting Bracket

**Filter, Regulator, Lubricator Assembly**

**Part No. 1651MA**

3/4" NPT air fittings

Air flow: over 75 cfm



1651MA

Part Number	Description
1651MA	Complete Automatic Air Control Unit, 3/4" PT, larger capacity and float type filter for automatic drain
1652M	Lubricator only, 3/4" PT, 1 quart capacity
1654B	Regulator with Gauge, 3/4" PT
1653MA	Automatic Air Filter, 3/4" PT, automatic float drain empties when full



**SAFETY** Precaution: Read and follow all safety and operating instructions.  
**WARNING:** Face & eye protection must be worn while operating power tools, per ANSI B186.1

DRILLS  
 ASSEMBLY  
 ABRASIVE  
 FINISHING  
 PERCUSSIVE  
 SPECIALTY  
 ACCESSORIES



**DRILLS**

**Quick Change Couplers**



Part Number	Description	Thread
1324	Quick Change Coupler	1/4" NPT
1325	Quick Change Coupler	1/2" NPT
1340	Female Coupler Nipple	1/4" NPT
1342	Male Coupler Nipple	1/4" NPT
1343	Female Coupler Nipple	1/2" NPT
1344	Male Coupler Nipple	1/2" NPT

**ASSEMBLY**

**ABRASIVE**

**Hi-Capacity Quick Change Couplers**



Part Number	Description	Thread
1316	Male Coupler Nipple	1/4" NPT
1317	Male Coupler Nipple	3/8" NPT
1318	Male Coupler Nipple	1/2" NPT
1391	Quick Change Coupler	1/4" NPT
1392	Quick Change Coupler	3/8" NPT
1393	Quick Change Coupler	1/2" NPT
1395	Female Coupler Nipple	1/4" NPT
1396	Female Coupler Nipple	3/8" NPT
1397	Female Coupler Nipple	1/2" NPT

**FINISHING**

**PERCUSSIVE**

**Crow's Foot Couplings**



Part Number	Description	Thread Size
		NPT
3017	1/4" Male NPT to Crow's Foot	1/4"
3018	1/2" Male NPT to Crow's Foot	1/2"
3019	3/4" Male NPT to Crow's Foot	3/4"
3020	3/8" FM NPT to Crow's Foot	3/8"
3021	1/2" FM NPT to Crow's Foot	1/2"
3022	3/4" FM NPT to Crow's Foot	3/4"
3023	Rubber Washer for Crow's Foot	N/A

**SPECIALTY**

**ACCESSORIES**

**Air Hoses**



Part Number	I.D.		Length		Fittings
	in.	mm	ft	m	
1359	1/4	6	6	2.7	1/4" NPT
1376	3/8	10	6	2.7	1/4" NPT
1377	3/8	10	25	11.0	1/4" NPT
1378	3/8	10	50	23.0	1/4" NPT
1360	1/2	13	25	11.0	1/2" NPT
1388	1/2	13	50	23.0	1/2" NPT
1358	3/4	20	3	1.3	None
1365	3/4	20	3	1.3	None
1361	1	25	4	1.8	None

**Nylon Recoil Air Hose**



Part Number	I.D.		Length		Fittings
	in.	mm	ft	mm	
1326	1/4	6	25	11	1/4" NPT
1327	3/8	10	25	11	1/4" NPT

**Hose Swivels**



Part Number	Description
3011	3/8" - 24 Thread x 1/2" Hose Barb
3012	1/2" NPT Thread x 1/2" Hose Barb
3013	7/8" - 24 Thread x 3/8" FM NPT
3014	1/2" NPT x 3/8" FM NPT
3015	7/8" - 24 x 3/8" NPT

**Sioux-Per Swivel**

**Part No. 1337**

Allows the air hose to rotate 360° on 2 axes



**SAFETY** Precaution: Read and follow all safety and operating instructions.

**WARNING:** Face & eye protection must be worn while operating power tools, per ANSI B186.1



**Grease Gun**

**Part No. 468A**

Used with impact wrenches and multi-assembly angle tools



**Grease Gun**

**Part No. 439**

Used with impact wrenches and multi-assembly angle tools.

For use with grease tube 1232A-04



**Grease Nozzle**

**Part No. 469A**

Used with No. 468A grease gun



**Grease**

Part Number	Size
289A	1 Quart
289A-1	2 Pounds
289A-2	6 Pounds
1198	6 Ounces
1198-1	2 Pounds
1198-2	6 Pounds
1232A	3 Ounces
1232A-02	1 1/2 Ounces
1232A-04	4 Ounces
1232A-1	1 Quart
1232A-2	1 Gallon

**Air Motor Oil For Air Tools**

**Part No. 288**

1/2 Pint

**Part No. 288-1**

1 Quart

**Part No. 288-2**

2 Liter



Part Number	Size
1316	1/2 Pint
1317	1 Quart
1318	2 Litre

**Balancers**



2300-4

Part Number	Capacity		Cable Length	
	lb	mm	ft	m
2300-4	2 - 4	0.9 - 1.8	5.2	1.6
2300-6	4 - 6	1.8 - 2.7	6.7	2.0
2300-8	6 - 8	2.7 - 3.6	6.7	2.0

**Silencer**

**Part No. 2306**

Silencer for #2 series pistol grip tools and impact wrenches



**Air Regulator**

**Part No. 1335**

1/4" NPT Male / Female

- Mounts inline with air inlet
- Allows fine adjustment of air flow



**SAFETY** Precaution: Read and follow all safety and operating instructions.  
**WARNING:** Face & eye protection must be worn while operating power tools, per ANSI B186.1



DRILLS

ASSEMBLY

ABRASIVE

FINISHING

PERCUSSIVE

SPECIALTY

ACCESSORIES

**Cutter Kit**

Part No. 278



Sioux Part Number	Broach Cutter Size - Imperial
HB437	7/16"
HB500	1/2"
HB562	9/16"
HB625	5/8"
HB750	3/4"
HB875	7/8"
HB100	1"

**Kit includes:**

HB01 - Arbor, HB02 - Pin, HB03 - Hex Key  
Case  
5 Cutters (1/2", 9/16", 5/8", 3/4", 7/8")

**Cutter Kit**

Part No. 279



Sioux Part Number	Broach Cutter Size - Metric
HB12M	12 mm
HB13M	13 mm
HB14M	14 mm
HB16M	16 mm
HB18M	18 mm
HB20M	20 mm
HB24M	24 mm

**Kit includes:**

HB01 - Arbor, HB02 - Pin, HB03 - Hex Key  
Case  
5 Cutters (12, 14, 16, 18 & 20 mm)

SAFETY Precaution: Read and follow all safety and operating instructions.



**WARNING:** Face & eye protection must be worn while operating power tools, per ANSI B186.1

